

PYTHON

BBM103 Introduction to Programming Lab 1

Hacettepe University
Computer Engineering Department

Installation

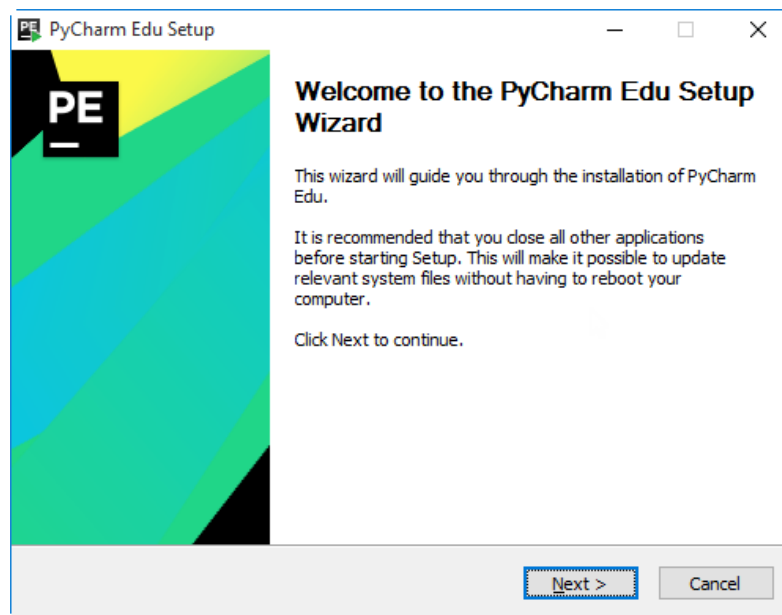
1. Download PyCharm Edu from <https://www.jetbrains.com/pycharm-edu/download/>

Note: Be careful to choose your operating system before downloading the installation file.

2. Follow the steps suggested by the installation wizard. Note that some steps are different depending on your operating system.

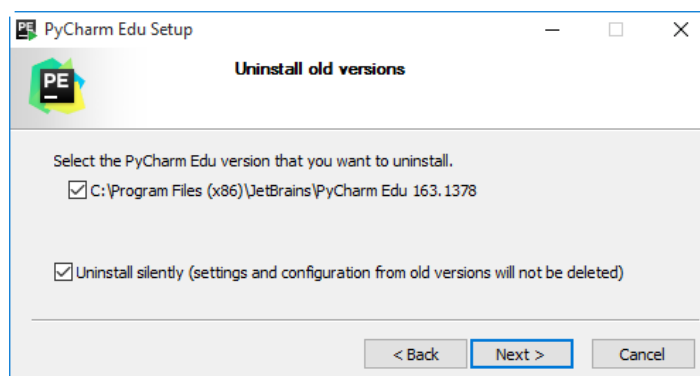
Windows

1. Double-click pycharmEDU-xxx.xxx.exe file to launch the installer. Your computer verifies it, and then opens the first page of the installation wizard:



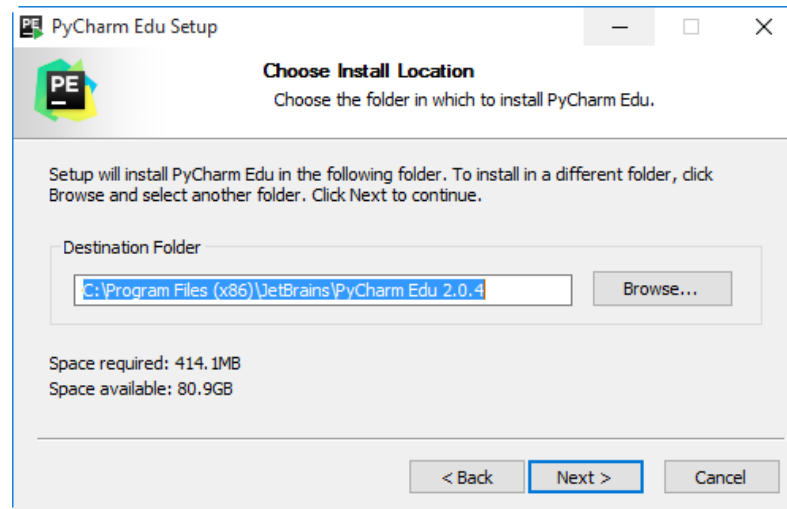
Click **Next**

2. On the second page of the wizard, you have to specify whether you wish a previous installation to be uninstalled, and, moreover, silently:

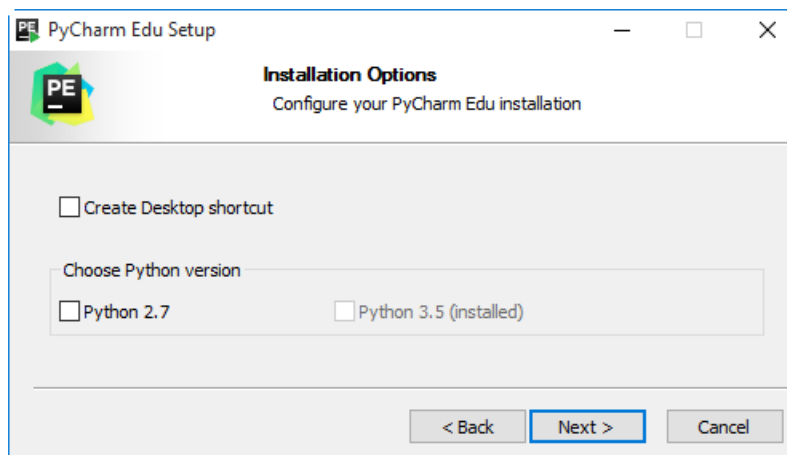


Click **Next**

3. On the **Choose Install Location** screen, specify the destination directory where the product will be installed. The installation wizard suggests a default location. To choose a custom location, click **Browse** and select the desired location in your file system. When ready, click **Next**.

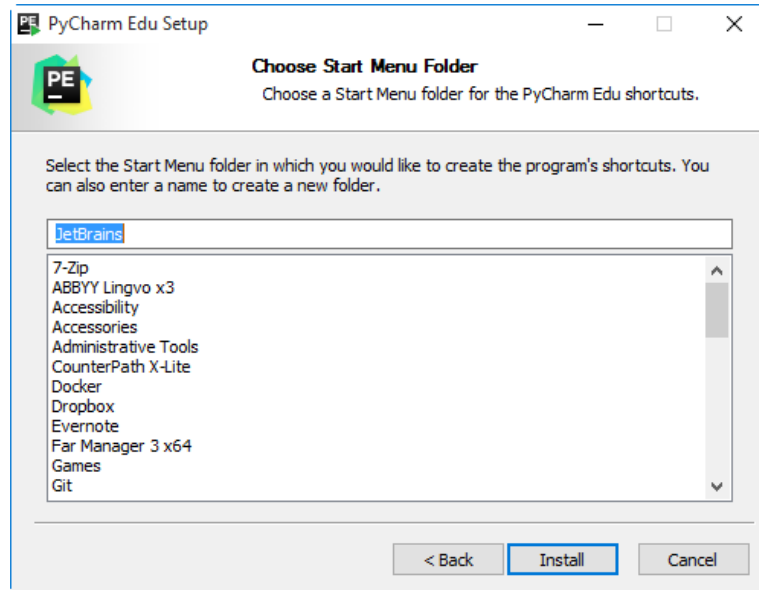


4. On the Installation Options screen, specify the following options:

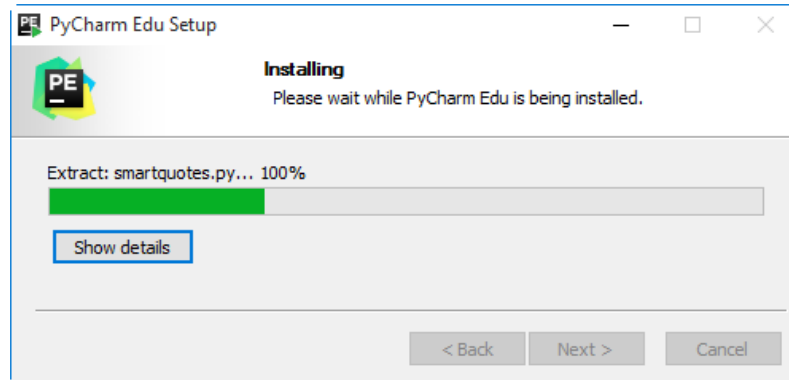


- **Create Desktop shortcut:** if you select this check box, the shortcut to PyCharm Edu will appear on your Desktop. Thus you will be able to launch PyCharm Edu from your Desktop, by double-clicking this shortcut icon. If you leave this check-box unselected (this is what the installer suggests), then the shortcut on the Desktop will not be created, and you will have to launch the application from the Start menu or from your file system only.
 - If you are working on Windows XP, you can opt to select the check-box **Create Quick Launch** shortcut.
 - Choose Python version: in this section, you have to specify which Python version will be installed for PyCharm Edu. The installer suggests you to choose between Python 2.7 and Python 3.5 (which is pre-installed). If you are not sure which version suits you better, refer to the [comparison](#) of versions.
5. On this page of the installation wizard, you have to specify in which folder of the **Start** menu the application shortcuts will appear. If you do not enter the folder name, then your **Start** menu will contain the folder **JetBrains**.

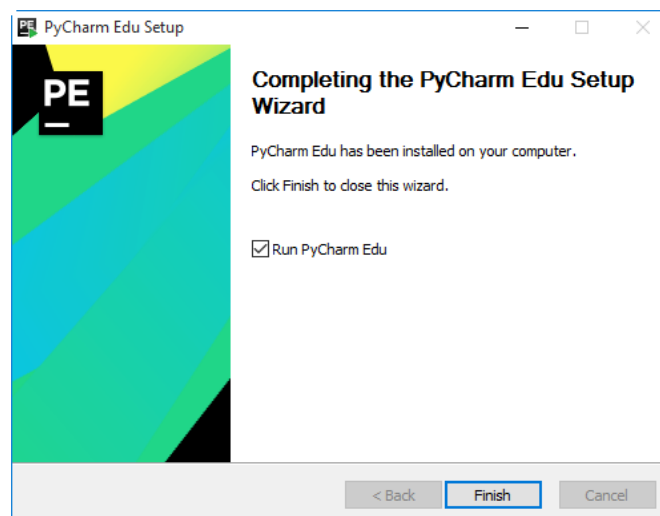
Click **Install**.



See how the installation works:



6. Installation is finished.

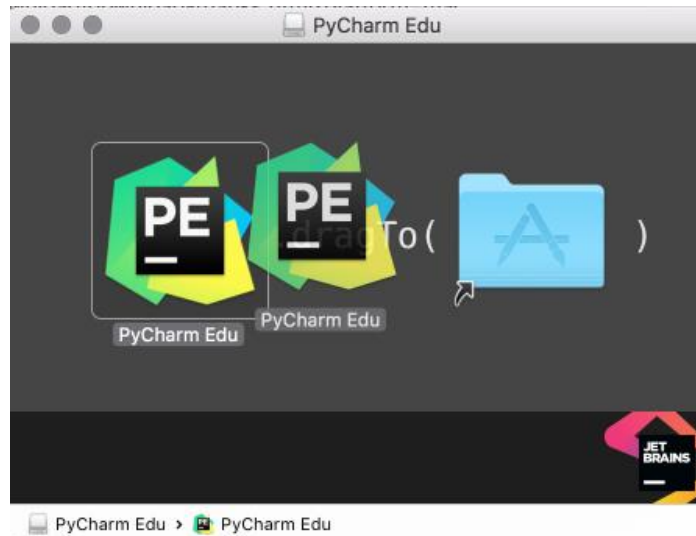


Select the checkbox **Run PyCharm Edu** (if you want to launch the product immediately), and click **Finish**.

Mac OS

The installer includes JRE, but does not include Python. Instead, the installer makes use of the system Python interpreter, which is always present on Mac systems.

1. Double-click the downloaded pycharmEDU-xxx.xxx.dmg to open it.
2. In the window that opens, drag-and-drop the PyCharm Edu icon onto the Applications:



3. Open **Applications**, and locate **PyCharm Edu**:



4. Double-click **PyCharm Edu** to launch it.

Linux

Linux installation is the trickiest one. There is no single Linux distribution in the world, so that's why we distribute PyCharm Edu in a binary archive instead of specific packages for a particular distribution. It means that on Linux, PyCharm Edu doesn't need any special package or an installation script. To launch PyCharm Edu, you have to unpack its archive.

Please note that the installation archive includes neither Python, nor JRE. So you need to ensure that there are proper JRE and Python installed. For Python it's always not a problem since every Linux distribution comes with Python already installed.

The problem may occur only with JRE. Please make sure you have Oracle JRE 1.6+ or OpenJDK 1.7+. To do that, check `$java -version` in your system terminal.

The problem may occur only with JRE. Please make sure you have Oracle JRE 1.6+ or OpenJDK 1.7+. To do that, check `$java -version` in your system terminal.

If not, follow the instructions in order to install OpenJDK: <http://openjdk.java.net/install/>

or Oracle JRE: <http://docs.oracle.com/javase/7/docs/webnotes/install/linux/linux-jre.html>

The downloaded PyCharm Edu archive name looks like:

`pycharmEDU-xxx.xxx.tar.gz`

1. Copy the `pycharmEDU-xxx.xxx.tar.gz` to the desired installation location, preferably new empty directory. Make sure you have read-write permissions for that directory.
2. Unpack `pycharmEDU-xxx.xxx.tar.gz` using the following command:

```
tar xzf pycharm-edu-*.tar.gz
```

3. Remove `pycharmEDU-xxx.xxx.tar.gz` to save disk space (optional)
4. Run `pycharm.sh` from the bin subdirectory

That's it!

Note: You may want to create a Desktop entry for the new PyCharm Edu installation. Follow the instructions on how to create a launcher on your windows management system and point this launcher to `pycharm.sh`.

Launch and First Application

PyCharm Edu starts and shows the Welcome screen:

